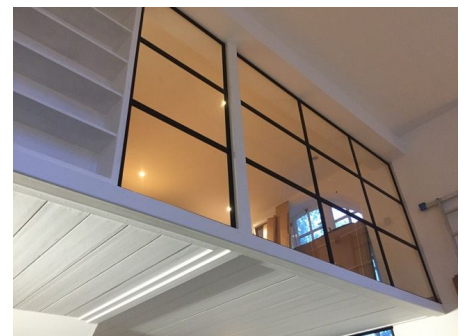




## T-Bar Slimline

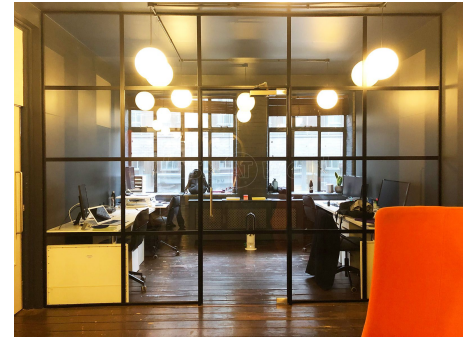
Our T-Bar Slimline system becomes more and more popular, reflecting modern trends with its aesthetic, but at a price point and lead time that makes it more attractive than other products in the market.





## So what is it?

It is essentially a Commercial Frameless Glass partitioning system, familiar from many offices, but with aluminium bars face applied to each side of the glass. This provides the cross bar and transom effect that is so in demand, but using full height pieces of glass, not individual panes of glass.







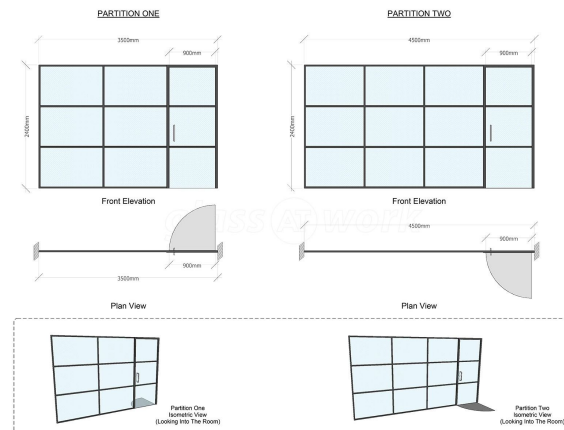
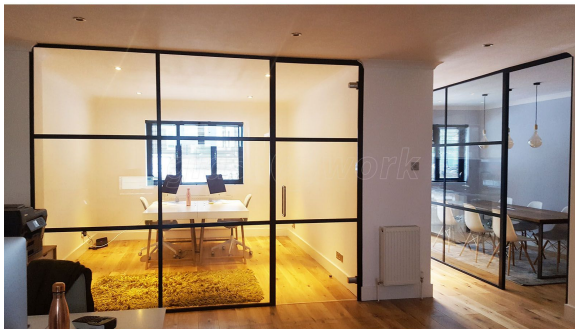
## What do you mean by “face applied”?

Imagine a sheet, or sheets, of glass running from floor to ceiling, held in an aluminium perimeter track. The glass is toughened, so it is structurally stable and then flat aluminium bars are cut to size and bonded onto the sheets of glass using a suitably strong tape, or adhesive. They are applied to both faces, so that you don't see the back of the bar from the other side.



## How many Bars can I have?

As standard we quote for 2 horizontal bars and a vertical bar at a maximum of 1000mm centres. We can provide more, but it would cost more than our initial quoted price, as there's more aluminium required and more labour time on site to cut and apply them.



## Is it Crittall?

The quick answer is, no. Crittall is a brand name and we do not supply that system, or others of similar construction. Our system does not use welded steel frames or individual pieces of glass between the mullions and transoms (vertical and horizontal bars).

## How long will it take?

As we're using a more simple construction method and it's made on-site, not in a factory, we can get to site relatively quickly. If ordered we're with you to survey the completed openings within around 5 working days. With those measurements we can then order the glass to the correct sizes. 2 weeks or so after that we'll arrive with the glass and build it. Length of build time varies according to size, a single screen might be a day, but the more complex it becomes the longer it could take.



## Do you do a Double Glazed version?

This is a product in development and as yet we can't offer it on our website. We are moving rapidly towards a product that reflects the look required, but it isn't quite there yet. There would be specific differences to this product which would need explaining and we could provide a price on application.

## What colour can I have the metalwork?

Black (RAL 9005) is the colour of choice for most with this product, but it can be produced in any RAL colour. If it is to be another colour we would advise that there may be a longer lead time and a slight uplift in cost.



## What door types are there?

In this system glass doors are carried within an aluminium door frame, of matching colour. This allows the aluminium bars to be cut and those cut edges are cloaked by the framework when the doors are in the closed position.



The doors themselves are a sheet of toughened glass, with bars applied front and back, using the same tape. There is no perimeter trackwork to the perimeter of the door leaf in our standard system.

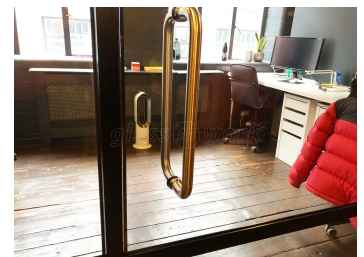
If you don't want bars on the door, then we could leave it as a full glass doors, although film would need to be applied to make it DDA compliant.

We can offer a framed glass door that features an aluminium perimeter around the door leaf itself. Please ask us for a quotation if this is the preferred option, as it will make the door more expensive.

## What handles can I have?

We have a lot of choice, all of which is supplied in satin stainless steel. Our standard handle is a pair of 300mm D Handles, but longer versions are available, as well as a lever latch or lever lockset if required.

With this system we do get requests for black or coloured handles. The only way to do this would be to powder coat conventional steel ironmongery. We would advise that although this does the job, it will wear over time. As a painted product the paint can get damaged through constant use or sharp objects, such as jewellery.





## Do you do Domestic Installations?

As you will see from the images and reviews, then yes we do. We would stress however that this is a Commercial system, designed for Commercial usage and so it may not be seen by some as a domestic product. Also, we are used to operating in office environments, where sites are available, all day, 5 days a week.

In that situation specific times are not as important as they are to a domestic customer, plus any remedial work that may be required doesn't need anyone to take another day off work.

We do keep you very well informed but we like to be upfront about how we work, so you can make the judgement.



## Where do you install?

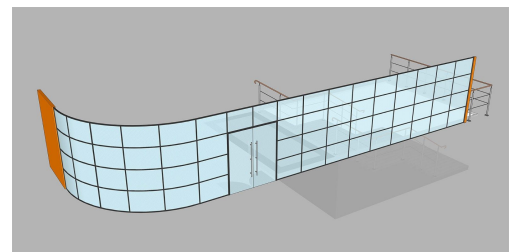
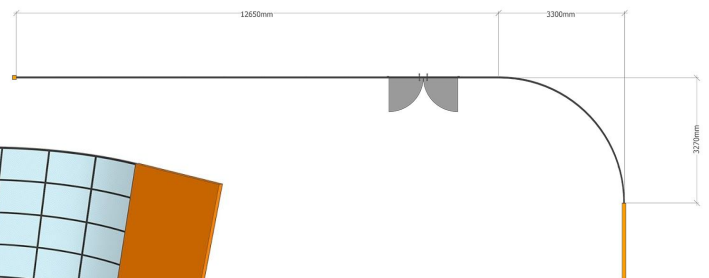
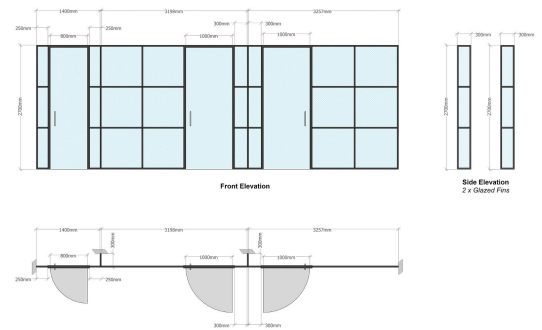
Essentially we cover mainland Great Britain, although certain outlying areas do attract an understandable uplift in cost to cover the additional travel and carriage charges.

## Can it be Fire Rated?

As an aluminium framed system then we cannot provide a fire rated version. If we convert it to a steel framed system then yes, we can produce the system shown with a fire rating of 30 minutes. Without a door the partition will achieve 30 minutes Integrity AND Insulation (EI30). With a door in the screen that reduces to 30 minutes Integrity ONLY (E30). Prices for the steel system would be provided on application.

We can advise on which system has the rating that you need, but you would need to contact the relevant authorities to ascertain the rating you require in each situation as given in the Building Regulations Document B.

In this document we show some examples of the system in-situ which we hope would give you enough detail to make your judgement, we do not have a showroom, but there are numerous additional images on our website, on the [Reviews and Inspiration page](#).







Glass AT Work is a trading name of Work Junction Ltd - the office interiors company  
VAT Registration Number: GB 134 4902 26 | Registered in England and Wales: 07968182  
Registered Office: Work Junction Ltd, Unit 35, 53 Mowbray Street, Sheffield, S3 8EN, United Kingdom

